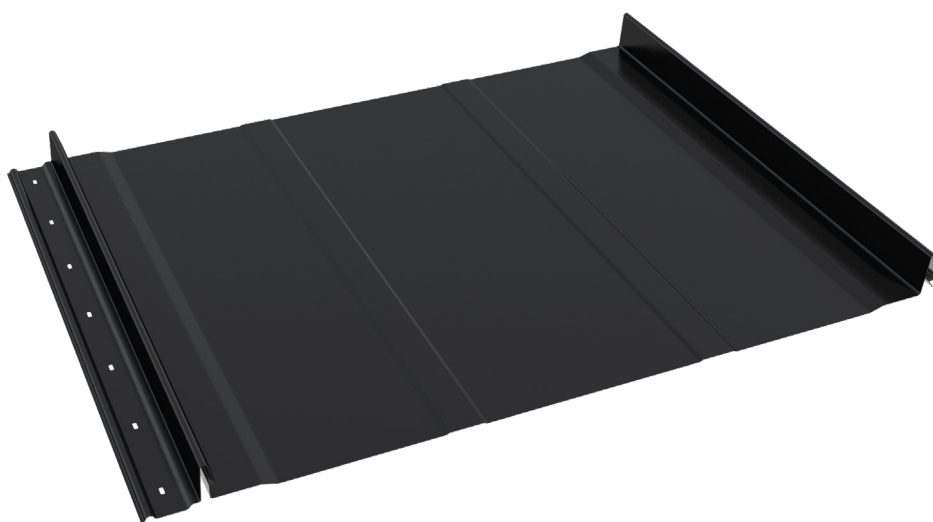


Panel HIGH-TECH



product
data sheet



34-700 Rabka-Zdrój
ul. Kilińskiego 49a



T: +48 18 26 85 200
F: +48 18 26 85 215



biuro@blachotrapez.eu
www.blachotrapez.eu

General information

The roof and façade made of standing seam sheet metal is one of the strongest trends in architecture. The HIGH-TECH panel is a modern ornament, a sophisticated fitting, which closes the whole project and emphasises its sophisticated nature.

Advantages and characteristics

An external snap lock with a special profile and optimised height facilitates installation. Flat panels in contrasting combinations with wood, clinker, stone, glass or gabions determine the direction of aesthetics of contemporary architecture. The HIGH-TECH panel combines minimalism, elegance, an original shape and versatility.

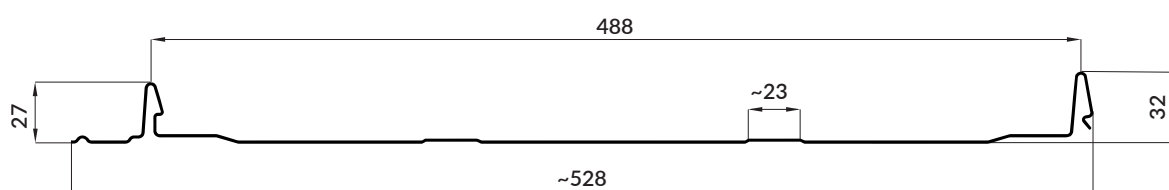
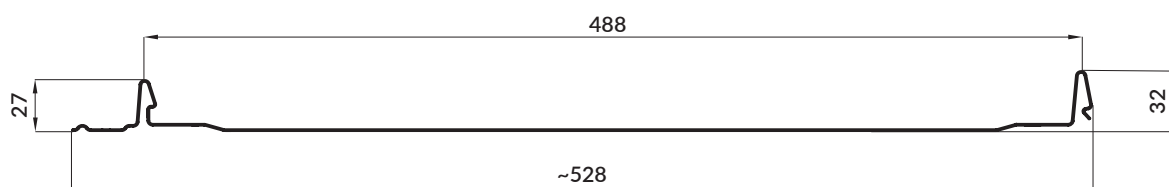
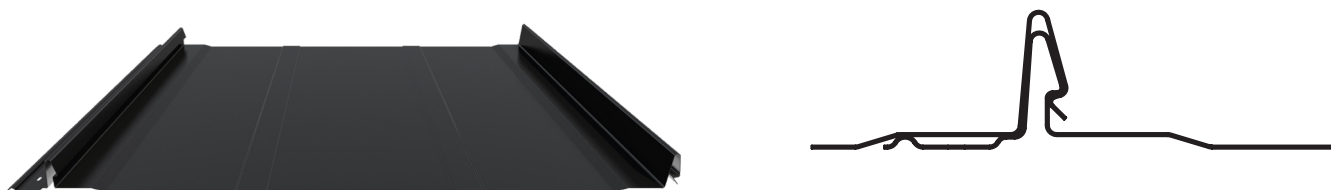
The HIGH-TECH panel is produced in various options depending on the Customer's needs, e.g. with the option of notching for the bend, notches with a bend and with double longitudinal ribbing (trapezoidal). Everything depends on the individual needs, requirements and preferences of the Customer.

Technical details

Total width:	~528 mm	Recommended length:	max 8 mb *
Cover width:	488 mm	Height of the welt:	32 mm
Thickness of the finished product (steel):	0,5 mm	"Klik" height:	27 mm

* Blachotrapez is not responsible for mechanical damage caused during transport in sheets longer than the ones recommended in the Technical Specifications of the Profile. Ordering sheets longer than recommended increases the risk of damage during transport, processing and assembly. Sheets longer than recommended may be deformed. This is due to the production technology and the expansion of the material under the influence of temperature amplitude.

Panel HIGH-TECH - dimensions and welt, Cross-section



Application

Roofing panels are delivered in the form of ready-made elements, and are used for wall and roof covering with a slope of not less than 9°. These sheets are used as finishing and safety elements in buildings. Roofing panels must be used in accordance with technical projects of buildings, the manufacturer's installation instructions and recommendations, current standards, and technical and construction regulations.

The applied material has a wide range of applications due to the environmental classification, which is confirmed by a long warranty period depending on material (see the separate warranty form uploaded to our website www.blachotrapez.eu)

Research results / documentation

All of our products have a Declaration of Performance made on the basis of Standards and Regulations related to construction products in force. We also have Hygienic Certificate No. HK/B/0910/01/2014 issued in 2015 by the National Institute of Hygiene (PZH).

These documents are issued to implemented orders. In order to obtain them, please contact the Quality Control Department - the scheme of procedures is provided on our website.

Installation

The fact that the panels are provided with a snap lock enables quick and reliable connection while maintaining high tightness, which gives them an advantage over double seam sheet metal. However, the arrangement of assembly holes along the seam ensures that the fixing screws are covered by the adjacent panel. The result is aesthetically pleasing roofing without visible fixings.

The High-Tech panel is characterised by greater stability thanks to a specially designed snap lock system. First of all, it reduces the likelihood of stress during installation when using screws. The specially profiled shape of the assembly holes guarantees a proper alignment of connection between the sheet metal and the screws, so that the roof can move freely during changing weather conditions.

During the installation of roof panels, for any type of sheet metal, the flat sheet metal surfaces may wave. Such a sheet takes the shape of the roof base. Waving of such panels is a natural and frequent phenomenon. It is related to the technology of production and installation of the sheet metal, its thermal expansion and the phenomenon of light reflection. In order to minimise the effect of waving, the panels should be installed on a very carefully prepared and levelled surface, in accordance with the rules of roofing and installation instructions. A positive effect can also be achieved by using a matt coating (less light reflections), using panels with longitudinal ribbing or panels with factory-applied soundproofing layer. In addition, the option of a trim with bending or a trim for bending can be used. These options allow the bottom edge of the sheet to be stiffened and transverse corrugation to be avoided. It is also a natural phenomenon that the panel is noisy in windy conditions. To reduce this effect, a hairy membrane, soundproofing tape, structural mat, self-adhesive anti-condensation membrane or other materials can be used.

Additional information

For all types of profiles we have properly prepared instructions for transport, storage, cutting and maintenance of sheet metal. To familiarize yourself with the content, please visit www.blachotrapez.eu and contact our Technical and Trade Consultants or branches of our company - addresses can also be found on our website.

We also have numerous awards and certificates for both our raw materials and ready-made products, which you can read on our website www.blachotrapez.eu